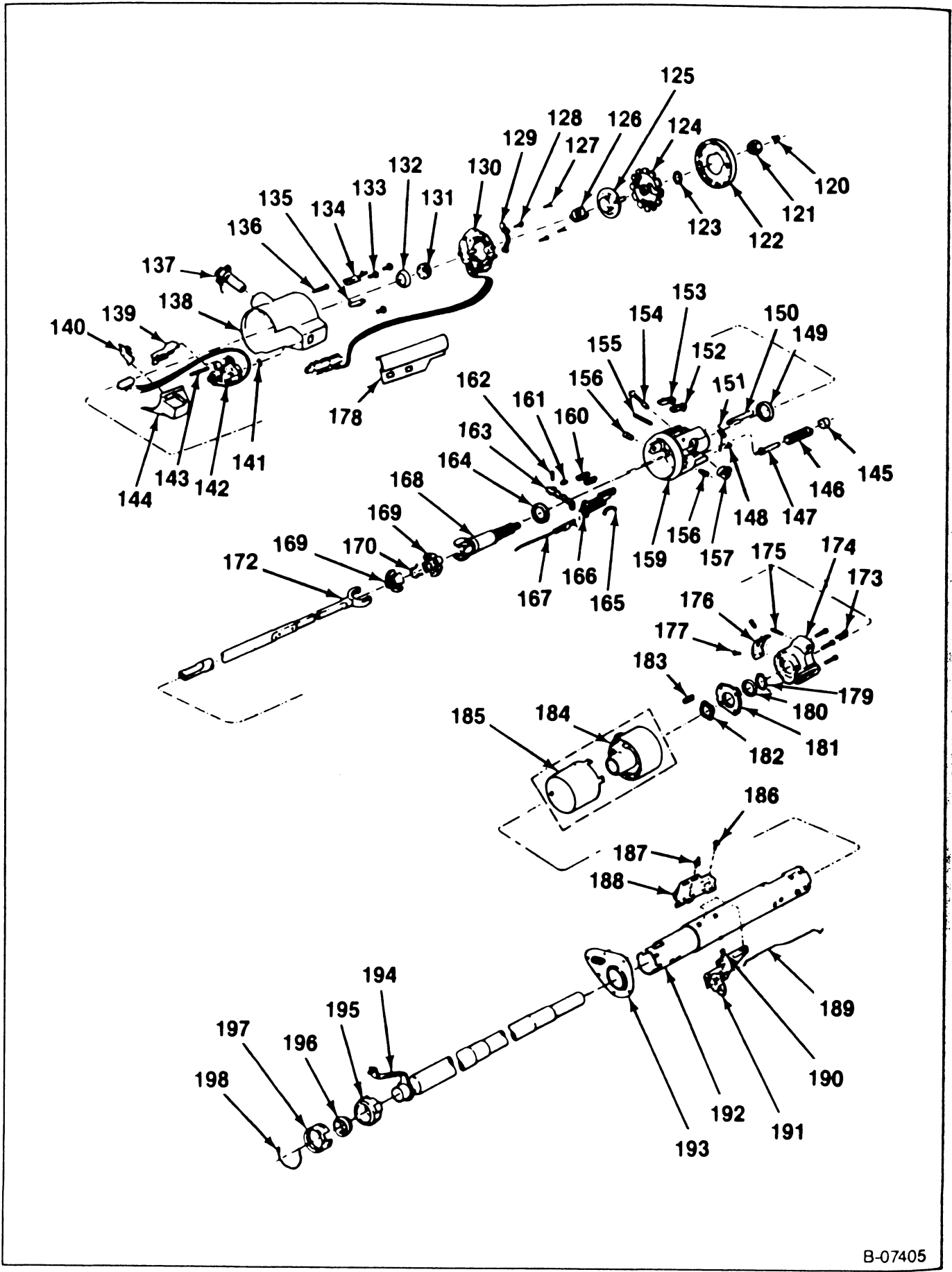
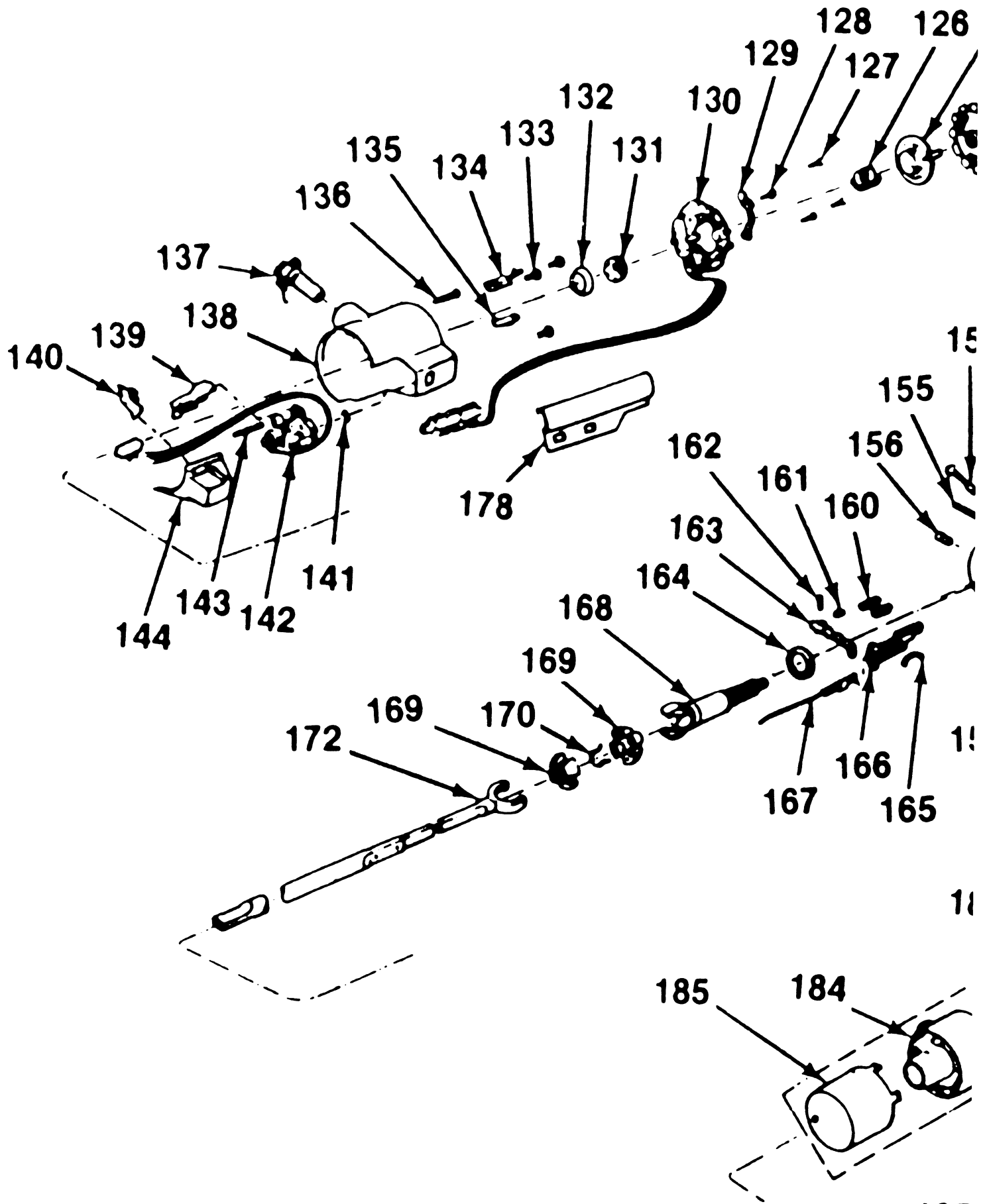


# 3B4-28 STEERING COLUMN



B-07405

Figure 29—Tilt Steering Column (RV and G Models)



## STEERING COLUMN 3B4-29

120. Retainer	146. Tilt Spring	174. Housing Support
121. Nut	147. Spring Guide	175. Pin
122. Lock Plate Cover	148. Screw	176. Shift Lever Gate
123. Retainer	149. Bearing	177. Detent Plate Screw
124. Lock Plate	150. Lock Bolt	179. Retaining Ring
125. Cancelling Cam	151. Lock Bolt Spring	180. Washer
126. Bearing Preload Spring	152. Lock Shoe	181. Lock Plate
127. Turn Signal Screws	153. Lock Shoe	182. Wave Washer
128. Tap Screw	154. Sector Shaft	183. Gear Shift Lever Spring
129. Actuator Arm	155. Lock Shoe Pin	184. Gear Shift Lever Bowl
130. Turn Signal Switch	156. Pivot Pin	185. Shroud
131. Inner Race Seat	157. Actuator Sector	186. Screw
132. Bearing Race	159. Housing Assembly	187. Stud
133. Screw	160. Shoe Release Springs	188. Switch
134. Tone Alarm Switch	161. Spring	189. Dimmer Switch Rod
135. Retainer Clip	162. Shoe Release Lever Pin	190. Nut
136. Lock Retainer Screw	163. Shoe Release Lever	191. Dimmer Switch
137. Ignition Lock	164. Lower Bearing	192. Jacket
138. Housing Cover	165. Rack Preload Spring	193. Dash Seal
139. Dimmer Switch Actuator	166. Actuator Rack	194. Shift Tube
140. Shield	167. Ignition Switch Actuator	195. Adapter
141. Pin Preload Spring	168. Sphere Spring	196. Lower Bearing
142. Pivot Switch	169. Centering Spheres	197. Retainer
143. Actuator Pivot Pin	170. Spring	198. Adapter Clip
144. Cap	172. Lower Steering Shaft	
145. Retainer	173. Housing Support Screws	

B-07365

Figure 30—Tilt Steering Column—(TV and G Models)