

**SERIAL NUMBER IDENTIFICATION**

**Vehicle**

† See Figures 30 and 31

The Vehicle Identification Number (VIN) is on a plate attached to the left hand door pillar, or on the left top of the dashboard (visible through the windshield) on later models. The gross vehicle weight (GVW), or maximum safe total weight of the truck, cargo, and passengers, is also given on the plate.

**1970 VEHICLES**

The first letter indicates the vehicle type, **C** for two wheel drive, **K** for four wheel drive. The second letter indicates the engine type, **S** for six cylinder, or **E** for V8. The first number is for the GVW range, either a **1**, indication 1/2 ton, or a **2**, indication 3/4 ton. The second and third numbers are for the body type: **04** for fenderside, or Stepside; **34** for widoside, or Fleetside. The third letter indicates the assembly plant. The fourth letter is for the model year (Z is for 1970). The last five digits are the serial numbers.

**1971 VEHICLES**

The plate is essentially the same as 1970, except that either a hyphen or a letter indicating the type of state certification appears between the body type numbers and the assembly plant letter. The model year number is 1.

**1972-78 VEHICLES**

The plates for these years are the same, with the exception of the engine codes, and the model years, of course. The first

letter indicates a Chevrolet (C) or GMC (T) vehicle. The second letter is the vehicle type, C or K. The third letter is the engine type. For 1972 this would be an **S** or an **E**. Later years are covered below. The first number is the GVW range, 1 (1/2 ton) or 2 (3/4 ton). The second number is the model type, 4 for cab and pickup box. The third number is for the year, 2 for 1972, for example. The fourth letter indicates the assembly plant. The last six numbers are the serial numbers.

The following are 1973-78 engine codes:

**1973 ENGINE CODES** — C: 250 six T: 292 six X: 307 V8 Y: 350 V8 Z: 454 V8

**1974 ENGINE CODES** — C: 250 six T: 292 six X: 307 V8 Y: 350 V8 2 barrel Y: 350 V8 4 barrel Z: 454 V8

**1975 ENGINE CODES** — C: 250 six T: 292 six X: 307 V8 Y: 350 V8 2 barrel Y: 350 V8 4 barrel M: 400 V8 4 barrel Z: 454 V8

**1976 ENGINE CODES** — D: 250 six T: 292 six V: 350 V8 2 barrel L: 350 V8 4 barrel V: 400 V8 4 barrel S: 454 V8

**1977 ENGINE CODES** — D: 250 six T: 292 six V: 350 V8 2 barrel L: 350 V8 4 barrel R: 400 V8 4 barrel S: 454 V8

**1978 ENGINE CODES** — D: 250 six T: 292 six U: 305 V8 L: 350 V8 R: 400 V8 S: 454 V8 Z: 350 V8 Diesel

**1979 VEHICLES**

The VIN is on a plate attached to the upper left hand side of the instrument panel. The interpretation for the VIN code is the same as outlined for 1972-78, except for the engine codes, which are:

**1979 ENGINE CODES** — D: 250 six T: 292 six U: 305 V8 M: 350 V8 2 barrel L: 350 V8 4 barrel R: 400 V8 S: 454 V8 Z: 350 V8 Diesel

**Engine**

† See Figures 32, 33, 34 and 35

The engine number is located as follows:

Inline six cylinder: On a pad on the right hand side of the cylinder block, at the rear of the distributor.

V6 and V8: On a pad at the front right hand side of the cylinder block, except for 1979 454 V8s, which have the code on a pad at the front top center of the engine block immediately forward of the intake manifold, and diesel engines, which have the code on a label attached to the rear face of the left valve cover.

**Example F1210TFA:**

- F-Manufacturing Plant: F-Fint and T-Tonawanda
- 12-Month of Manufacture (December)
- 10-Day of Manufacture (Tenth)
- T-Truck
- FA-Transmission and Engine Combination

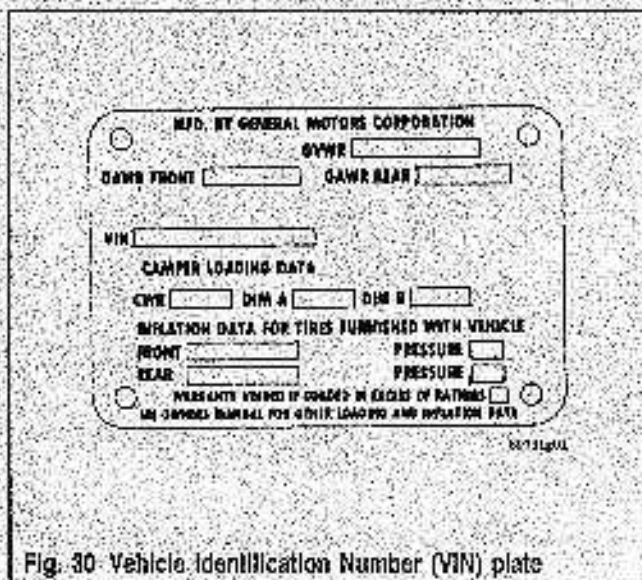


Fig. 30 Vehicle Identification Number (VIN) plate

Identification Number (VIN) plate